

**Presentation for
Train-the-trainer workshop on Fall and
Fracture Prevention**

**Improvement of Living Quality and
Prevention of home accidents for the elderly**

By Kenneth Au-Yeung
Manager, Elderly Resources Centre
Hong Kong Housing Society

Housing in Hong Kong

Hong Kong Housing Society is one of the major public housing providers

Ageing Population in Hong Kong

Projection of the Hong Kong Population

Year	Population	Age > 60 (%)
Year 2007	1,419,400	16%
Year 2013	1,428,900	19%
Year 2030	2,677,600	32%

1.4 million of Hong Kong population will be over 60 by 2013, it will increase to 2.6 million by 2030

**Elderly population by type of housing
& caring services**

Elderly population in mid 2005

Category	Percentage	Population
Old age home residents	1.7%	18,000
Living at home with Integrated Home Care Services	0.2%	1,700
Living at home with Enhanced Home & Community Care Services	91.5%	980,000
Living at home without community care service	6.7%	72,000

- Hong Kong government advocated "ageing in place" & "community care" in 2001
- 91.5% (980,000) of elderly at home receive no special caring services

**Hong Kong Housing Society
Development of Elderly Housing & related Services**

Chung Ling Shen milestone

70's
80's
90's
00's

**Hong Kong Housing Society
Main Aims for Elderly Housing & related Services**

Quality Housing
↓
Quality Living

Our Key Concerns on Ageing in Place of Elderly in community



Adopting the concept of Ageing in Place - Senior Citizen Residences Scheme



Cheerful Court

Jolly Place

Design Concept

- Self-contained apartments to foster independent living
- Comprehensive support facilities
- Universal design
- Safety, Security, Comfort
- Identity, self-esteem, and dignity



Adaptive Housing

- A Home-like, non-institutional environment



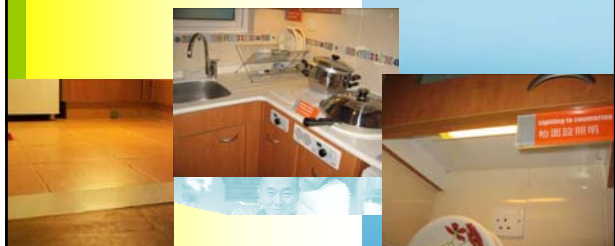
Adaptive Housing - Toilet

- Safety and Convenience



Adaptive Housing - Kitchen

- Safety and Convenience



Adaptive Housing – Common Area

- Safety and Convenience



Healthy Ageing - Amenities



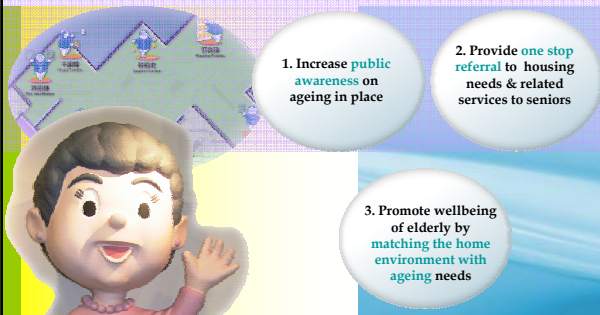
Healthy Ageing – Health facilities



Promotion of Ageing in Place in the community



Services Goals of the HKHS ERC



Floor Plan & Facilities of the HKHS ERC



HKHS ERC - Major Services Provision



Extending safety to the outdoor environment

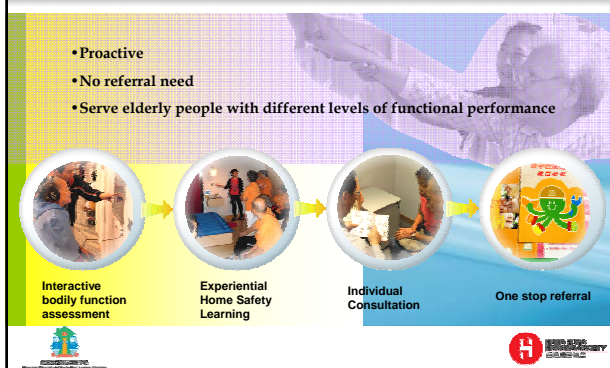


Walking through the simulated outdoor walking trail



Playing an interactive game

ERC's approach to promote elderly home safety



Visitors Feedback Towards The New Approach



85% of elderly visitors had positive feedback:

- Have learnt more home safety knowledge
- Understood more about own functional levels
- Interesting experience

Data Collected from the Elderly Visitors

Jul 2005 – Sep 2009
Over 31,000 people visited ERC and served over 52,000 people

Key Message

- Elderly's demand on housing and related services changes with regard to their ageing process
- Person-environmental matching and prevention of domestic accidents are crucial to help people ageing in place
- HS has been adopting the ageing in place concept to develop the first senior housing project in Hong Kong and open ERC to promote AIP
- Elderly visitors can learn more about home safety knowledge & could minimize the risk of domestic accidents through the approach adopted by the HKHS ERC

The Way Forward

1. Future research plan:
 - a. Develop statistical model to predict relative risk level of elderly prompt to domestic accidents
 - b. Develop interesting and effective intervention to reduce domestic accidents happen to elderly
2. Integrate property management with elderly care
 - a. Enhance the skills and knowledge of property management staff to care for the elderly residents
 - b. Train volunteers as “home safety ambassador”, to promote home safety among elderly residents



Thank You

